

GLACIER



-86°C ULTRALOW TEMPERATURE FREEZER



Environmentally Safe

- HFC CFC-Free Refrigerants
- CFC-Free Polyurethane Foamed In-Place Insulation
- Low Noise Operation 49 dB(A)
- New Design Compressors





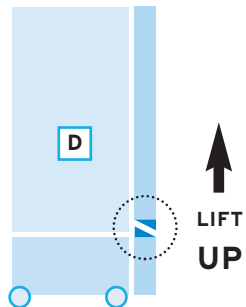
Door Latch

- Easy one-hand operation
- Durable, reliable, mechanism
- Low operating force
- Fastener for padlock



Ergonomics and Safety

- Eye Level Control Center
- Single Cam-Action Outer Door Catch
- “Claw” Inner Door Latches **A**
- Halo Bypass Coil Frame Heater (minimizes gasket frost buildup)
- Adjustable Chamber Shelves **B**
- Deadbolt lock with key **C**
- Slide-in-Place Outer Door **D** (lift up feature)
- Audible and Visual Alarms
- Backup Redundant Systems
- Internal Chamber Pressure Release Gasket

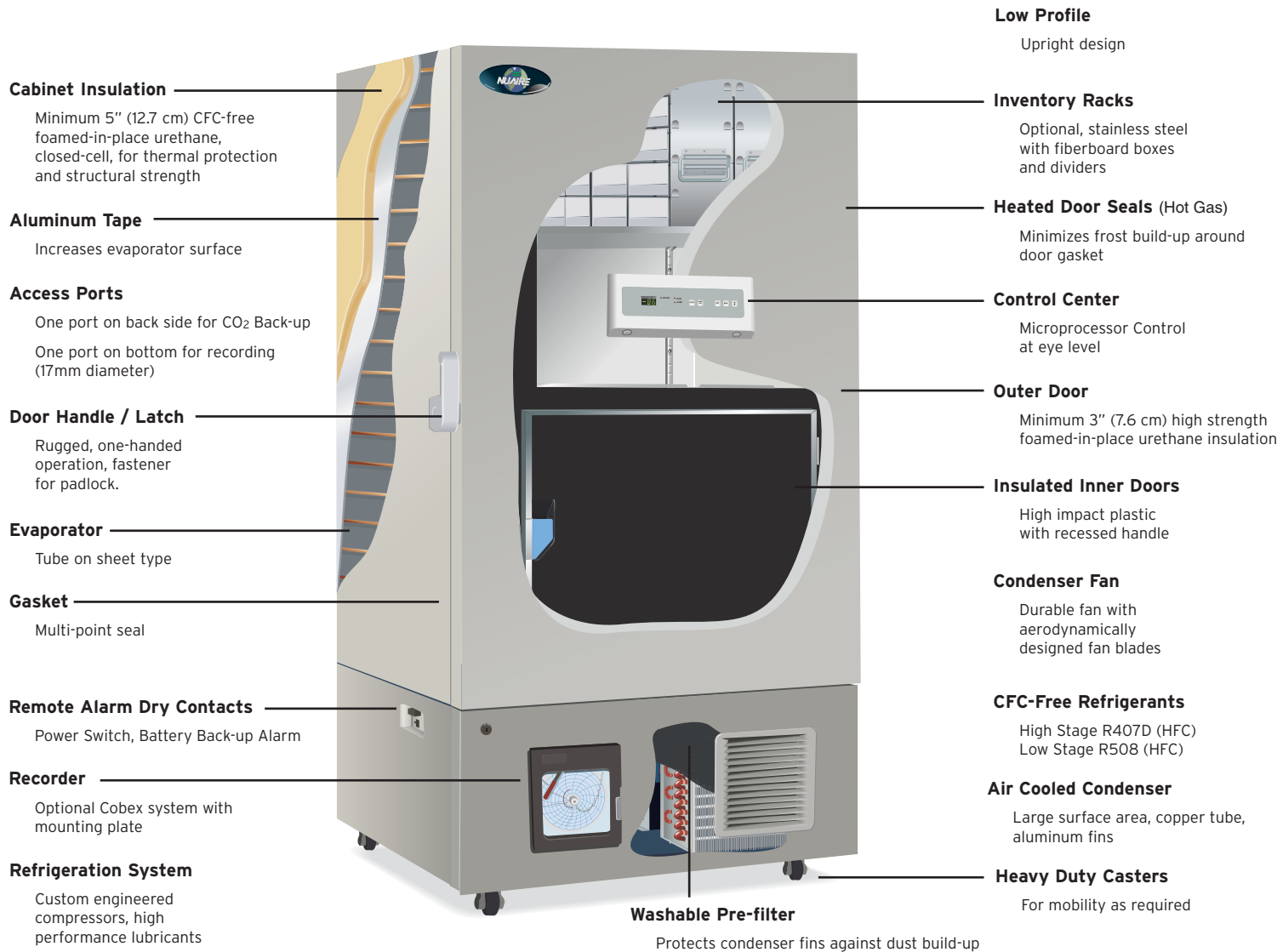




Controls

- Alarm System
- High / Low temperature alarm ($\pm 5^{\circ}\text{C}$ to $\pm 20^{\circ}\text{C}$ adjustable)
- Remote alarm dry contact
- Continuous self diagnostics (Sensors Abnormality)
- Battery check (Battery replacement recommended)
- Self Diagnostic Features
- Microprocessor Controls
- Automated CO₂ Back-up System
- Filter Check (Filter replacement recommended)
- Compressor time delay adjustment 2-15 min.
- Temperature zero adjustment
- Remote alarm delay adjustment





For more information contact NuAire, Inc. at 1.800.328.3352 or www.nuaire.com

Operations and Specifications

NU-9000 Series -86°C Ultralow Temperature Freezers

Specifications	Model	Ft. ³ / Liters	Electrical	Dimensions (Exterior W x D x H)	Dimensions (Interior W x D x H)	Shipping Dims m ³
	NU-9333	11.8 / 333	115V 60 Hz 15 Amps	29.5 x 34.5 x 72.8 in.	19.3 x 23.6 x 44.9 in.	2.00
	NU-9333E	11.8 / 333	230V 60 Hz	75 x 87.6 x 185 cm	49 x 60 x 114 cm	2.00
	NU-9483GC	17.1 / 483	220V 60 Hz	35.0 x 34.5 x 78.3 in.	24.8 x 23.6 x 50.4 in.	2.43
	NU-9483E	17.1 / 483	230V 50 Hz	89 x 87.6 x 199 cm	63 x 60 x 128 cm	2.43
	NU-9668GC	23.6 / 668	220V 60 Hz	44.5 x 34.5 x 78.3 in.	34.3 x 23.6 x 50.4 in.	3.00
	NU-9668E	23.6 / 668	230V 50 Hz	113 x 87.6 x 199 cm	87 x 60 x 128 cm	3.00



Features

Standard Features

- GC Model includes Voltage Booster
- CFC-free foam insulation
127 mm [5 Inches]
- Access port
- Heavy-gauge steel cabinet
- Heavy-duty swivel casters
- Claw-like inner door latches
- Key Lock
- Two [2] air insulated inner doors
- Four [4] compartments
- Four [4] shelves – Three [3] adjustable
- Multi-point gasket seals
- Eye-level controls
- Four [4] year parts only warranty (International)
- Two [2] year parts and labor warranty (U.S. and Canada)

Optional Features

- Cobex® temperature recorder
- CO₂ Back-up system [NU-UB2]
- Painted steel interior
- Surge suppressor
- Cryo gloves
- Floor anchor system
- Inventory system

Electrical Requirements

- 220V 60Hz; 230V 50Hz
- All single phase

Temperature Control System

- Microprocessor control system
- Digital temperature display
- Set point security system

Refrigeration System

- Air-cooled cascade refrigeration system
- Two [2] air-cooled compressors
- Temperature range -50°C to -86°C
- 100% HFC CFC-free refrigerants
- Efficient downfeed evaporator
- High capacity air-cooled condenser

Alarm Systems

- Microprocessor alarm
- Battery back-up
- Remote alarm contacts



All models are designed to meet CE and ETL criteria for safety and performance.



Operations and Specifications



CO2 Back-Up System

Will maintain -70°C at a 45 Kg. / Hr. rate.



Surge Suppressor

Tough, Safe Metal Housing



2" or 3" Fiberboard Boxes



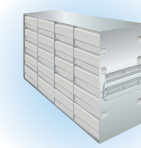
Cryo Safety Gloves

Protection for Hands and Arms



Temperature Recorder

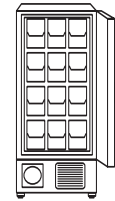
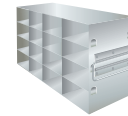
Easily Installed into the Freezer Control Panel



Freezer Inventory Racks

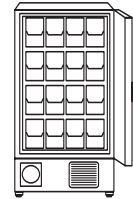
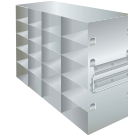
NU-9333 12 Racks

240 (4 deep, 4 high) 2" Boxes
Part# SV-HS-15-2-81



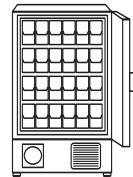
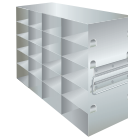
NU-9483 16 Racks

320 (4 deep, 5 high) 2" Boxes
Part# SV-HL-20-2-81



NU-9668 24 Racks

400 (4 deep, 5 high) 2" Boxes
Part# SV-HL-20-2-81



Electronic Access Control

The Lab Center EAC-1000B is an electronic lock with a motor driven latch. The built-in non-volatile memory stores as many as 250 user / supervisor codes and provides an audit trail. The EAC-1000B is available in three configurations:

Base Unit with Keypad

EAC Unit with Magnetic Strip Pod

EAC Unit with Proximity HID Pod



Lab Center EAC-1000B

(pictured with keypad)



For more information contact NuAire, Inc. at 1.800.328.3352 or www.nuaire.com



NuAire, Inc.

2100 Fernbrook Lane

Plymouth, MN 55447

U.S.A.

1.800.328.3352

www.nuaire.com