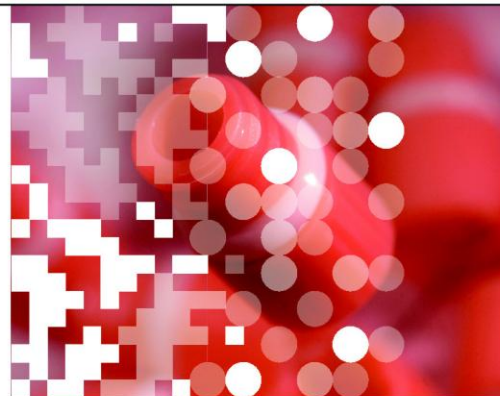


MICRONIC | SAMPLE STORAGE | CAPS

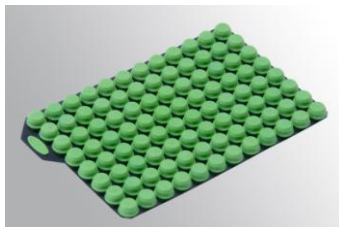
LINE OF CAPS FOR TUBE CLOSURE

ARE YOU USING STORAGE TUBES IN 96-WELL CONFIGURATION? IF SO, THEN MICRONIC OFFERS DIFFERENT KINDS OF CAPPING SOLUTIONS. DEPENDING ON YOUR APPLICATION THE FOLLOWING CAPPING OPTIONS ARE AVAILABLE:

- PLUG STYLE CAPS TPE
- PLUG STYLE CAPS EVA
- SCREW CAPS



Plug Style Caps TPE



Differences

- TPE = Thermo Plastic Elastomer
- Multi-pierceable without losing sealing integrity
- Working temperature -80°C to +80°C
- Available with split septum to pierce with a pipette tip
- 10 different standard colors
- Medical improved material (USP Class VI certificate)
- Special caps for Lyophilisation
- Autoclavable; individual caps without retaining foil
- SBS format 8x12 microplate standard (9mm pitch)

INFORMATION

- All caps are RNase, DNase and Pyrogene free
- Caps are produced in a Class 7 clean room

Plug Style Caps EVA



Differences

- EVA = Ethyl Vinyl Acetate
- Working temperature -80°C to +80°C
- Compliant with US and European Food contact regulations
- Cost effective
- Autoclavable
- SBS format 8x12 microplate standard (9mm pitch)

Screw Caps



Differences

- Screw Caps feature Silicon "O" ring
- Available in six different colours: White, Red, Green, Yellow, Blue and Transparent Blue
- Temperature range -180°C to 121°C
- Automation friendly
- Resists high chemical solvents
- Autoclavable
- SBS format 8x12 microplate standard (9mm pitch)



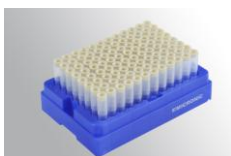
MICRONIC | SAMPLE STORAGE | CAPS

EXPLANATION DIFFERENCES

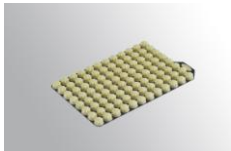
Plug Style TPE caps; available in 10 standard colors: Natural, Blue, Green, Grey, Pink, Brown, Black, Yellow, White and, Purple



Plug Style TPE Capcluster-96; for sealing 96 individual tubes in one turn. After capping remove the retaining foil to leave each tube individually capped.



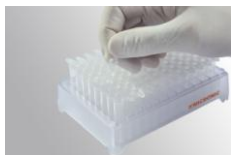
LyoCaps; available in Capcluster format and designed for sealing of Micronic tubes allowing water vapour to escape from tubes during the Lyophilisation process (water escapes through vents in the caps).



Screw Caps; available in six different colours: White, Red, Green, Yellow, Blue and Transparent Blue



Plug Style EVA Capband-8; comes in a strip of 8 EVA Caps for capping 8 tubes.



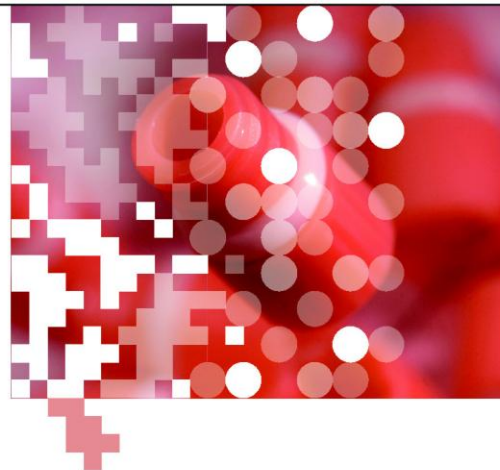
Plug Style EVA Break-off Capband-8; permits individual caps to be removed from the strip.



Plug Style TPE Capband-8 and -12; comes in a mat format (total of 96 caps) with tear off lines to obtain individual cap strips.



Plug Style TPE Capmat-96; holds 96 caps in a fixed foil, the 96 tubes are sealed together.



Please visit our website www.Micronic.com or www.integra-biosciences.de

