

MICRONIC | SAMPLE STORAGE | TUBES

GLASS TUBES 1.20ML IN 96-WELL CONFIGURATION

DO YOU NEED A STORAGE SYSTEM FOR HIGH CHEMICAL SAMPLES IN A 96-WELL CONFIGURATION? MICRONIC OFFERS BOROSILICATE GLASS HIGH RECOVERY 96-WELL SAMPLE STORAGE TUBES. THESE TUBES HAVE A FLANGED OPENING THAT IS DESIGNED TO BE USED WITH THE SPECIAL TPE CAPCLUSTER FOR GLASS STORAGE TUBES.

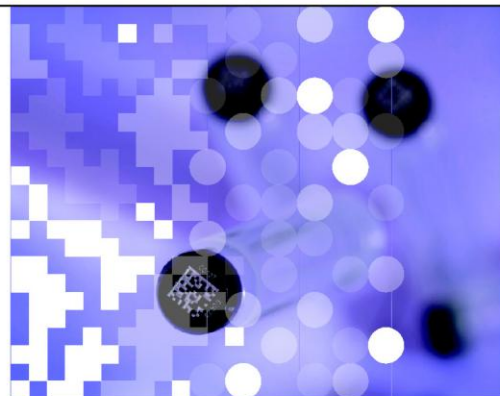
The Micronic Glass tube range provides a storage solution for samples stored in chlorinated solvents, DMSO and other high chemicals. For the secure tracking of your samples the glass tubes are available with a laser etched, 2D Tracker Data-Matrix code on the ceramic bottom of the tube. This ensures traceability when using glass tubes in your lab.

The 2D Tracker Data-Matrix coded tubes can be decoded with several 2D code readers: A Single Rack Scanner (MVS) to decode 96 tubes in 15 seconds, and a single tube scanner to simply decode one tube at a time. For high throughput applications, we offer a CCD camera based system, decoding 96 tubes within just 1 second.

The glass tube design is developed in conjunction with our users. Micronic has more than 25 years of experience in the life science market.

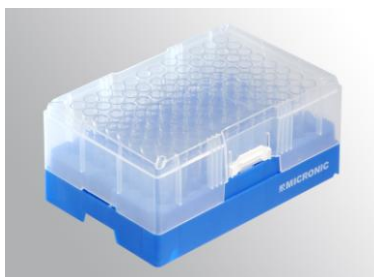
The tube has an inner V-bottom allowing for maximum sample recovery and the lowest dead volume. The tube top is specially designed to securely hold the TPE caps for glass tubes. The tube with a cap gives an integer solution in the sometimes extreme conditions in your lab.

The glass tubes are available in the Micronic Roborack-96 storage rack that can hold 96 glass tubes, in turn minimising the space required to store them. The Roborack-96 can easily be locked to prevent the tubes from falling out.



INFORMATION

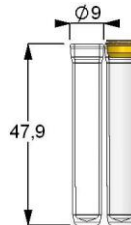
- Gross volume 1.20ml
- Net volume 0.90ml when used with a TPE cap
- Available with an inner V-bottom
- Available in a Roborack-96
- Laser etched 2D Tracker Data-Matrix code
- Automation friendly
- Resists high chemical solvents



MICRONIC | SAMPLE STORAGE | TUBES

SPECIFICATIONS

MATERIAL	TYPE 1 BOROSILICATE 33 EXPANSION GLASS
GROSS VOLUME	1.20ML
NET VOLUME	0.90ML
RESISTANCE	RESISTS HIGH CHEMICAL SOLVENTS
CODING	NON CODED, 2D TRACKER DATA-MATRIX CODED IN A CERAMIC SURFACE



ORDERING INFORMATION

1.20ml Non coded Glass tubes V-bottom

MP32009	1.20ml NC Glass tubes in Roborack-96	box/10
MP32009BC	1.20ml NC Glass tubes in Roborack-96 (barcoded)	box/10

1.20ml 2D Tracker coded Glass tubes V-bottom

MP52900	1.20ml 2D TC Glass tubes in Roborack-96	box/10
MP52900BC	1.20ml 2D TC Glass tubes in Roborack-96 (barcoded)	box/10

TPE capcluster-96 (for glass tubes only)

MP53900	Pierceable TPE capcluster-96 LB for Glass tubes	box/10
---------	---	--------

Please visit our website www.Micronic.com or www.integra-biosciences.de



INTEGRA Biosciences GmbH
 Ruhberg 4 • 35463 Fernwald
 Tel. 06 404 / 809 / 0
 Fax 06 404 / 809 / 251
info@integra-biosciences.de
www.integra-biosciences.de

